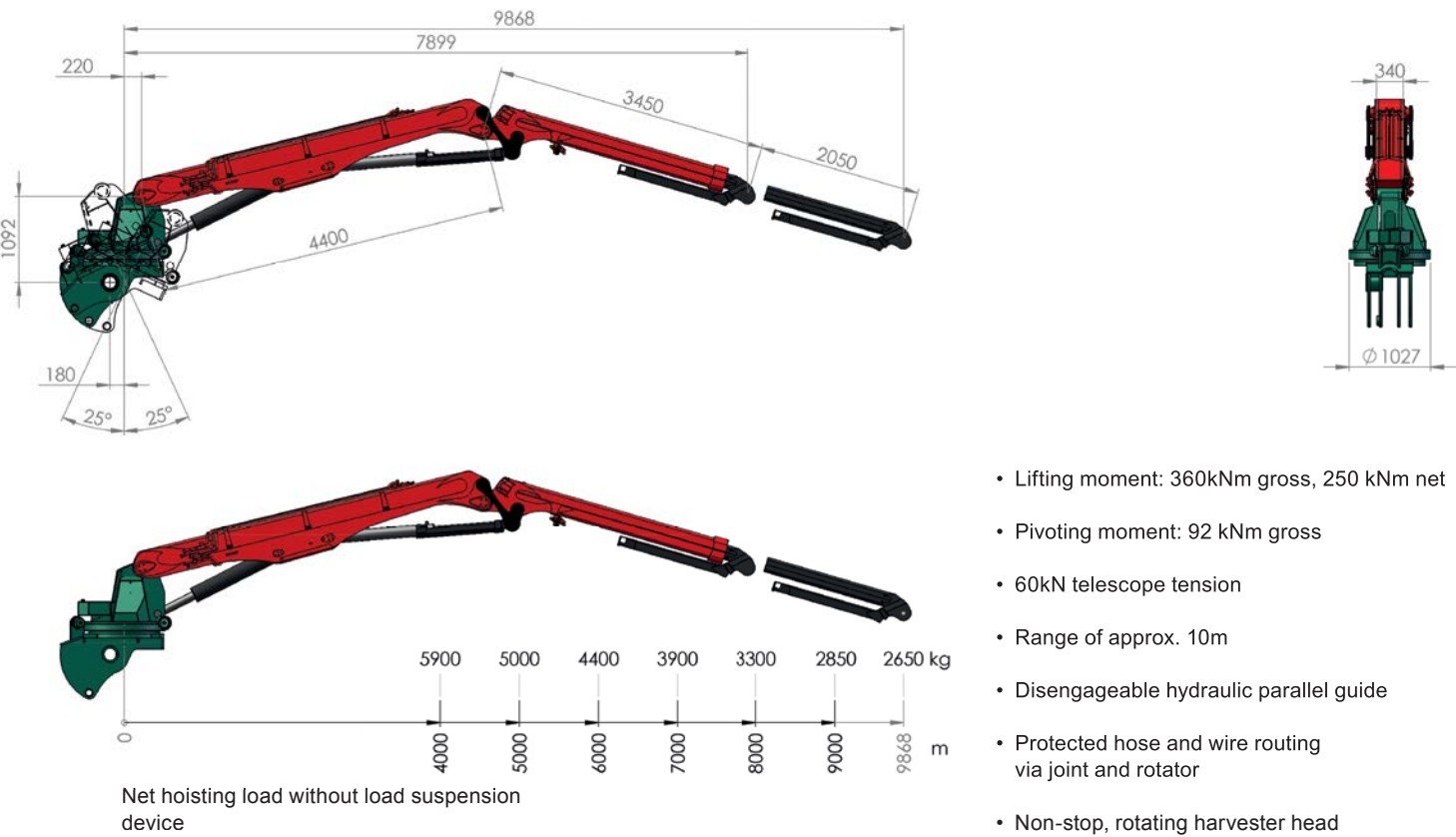


Epsilon X250 H100 strong timber crane



- Lifting moment: 360kNm gross, 250 kNm net
- Pivoting moment: 92 kNm gross
- 60kN telescope tension
- Range of approx. 10m
- Disengageable hydraulic parallel guide
- Protected hose and wire routing via joint and rotator
- Non-stop, rotating harvester head



HSM 405H



Technical changes reserved. July 2014 status change HSM405H_en_photon-sh-0714



HSM 405H Harvester



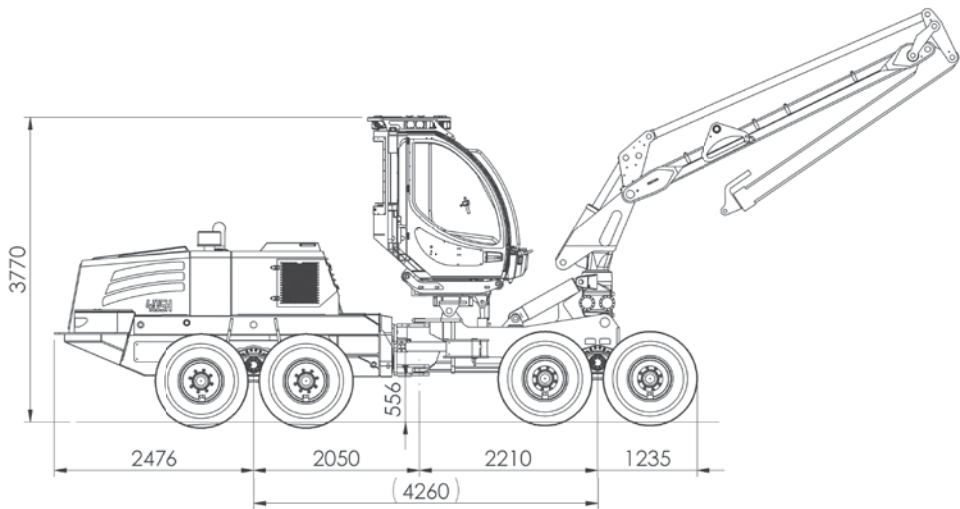
HSM Hohenloher Spezial-Maschinenbau GmbH & Co. KG

Technik die Freude macht.

D-74635 Neu-Kupfer
Im Greut 10
Phone + 49 (0) 7944 / 9191-0
Fax + 49 (0) 7944 / 9191-77
Mail: info@hsm-forest.com
www.hsm-forest.com



405H1 8WD



Engine:

- IVECO
- NEF 6 cyl. Common Rail Turbo / EuroMot TIER3
- Engine output: 175 kW (238 DIN-PS)
- Max. rpm: 2200 rpm
- Torque: 1020 Nm at 1500 rpm
- Engine capacity: 6.7 liters

Transmission:

- hydrostatic-mechanical
- CMC electronic control
- NAF 2-speed transfer gearbox
- 140 kN tractive force

Axles:

- NAF balanced portal tandem axles
- at the front: 100 % selectable differential lock
- at the rear: 100 % selectable differential lock

Brake:

- 2-circuit brake, disk brakes running in an oil bath
- Spring-loaded parking brake

Steering:

- Articulated steering with 2 cylinders
- 2 steering cylinders, 52° steering angle

Tyres:

- | | Size: | Total width |
|-----------|-------------|---------------------|
| • Series: | 710/40-22.5 | starting at 2700 mm |

Diesel tank:

- 500 liters

Hydraulics:

- Load sensing
- Variable pump: 1 x 145 cm³ / 1 x 190 cm³
 - Flow rate: 266 l/min at 1400 rpm
 - Pressure: up to 380 bar
- Fixed displacement pump:
 - Flow rate: 15.4 l/min at 1400 rpm
 - Pressure: 120 bar
- Hydraulic liquid: Saturated, synthetic ester
 - Panolin HLP SYNTH with Kleenoil
 - WGK 1 microfiltration
- Control block: Rexroth
- Crane control: CMC digital electronics with individually adjustable speeds and ramp times, 5 driving programs

Electrics:

- 24 V, 2 x 90 A alternator
- 2 maintenance-free dry-cell batteries, each with 75 Ah

Cab:

- Height-adjustable at the front / rear
- Bent Lexan windscreen
- Windscreen wipers in the front and at the side
- Tested safety cab
- Air-suspended comfort seat
- Hot water heating
- Air conditioner
- Height-adjustable and rotatable (270°)

Instruments:

- Diesel tank gauge, coolant temperature, alphanumeric display for rpm, driving speed, hydraulic liquid temperature and all operating data for driving and working hydraulics, Warning indicator for engine overheating

Weight:

- 20500 kg (series)

Torsion lock:

- 2 hydraulic cylinders

Crane:

- Loglift L181 V100
 - Range: 10 m
 - Gross lifting moment: 138 kNm
 - Pivoting moment: 38.4 kNm

Aggregate:

- Logmax 4000B with Super Cut
 - Felling diameter: 500 mm
 - Delimbing diameter: 355 mm
 - Max. feed force: 19.5 kN
 - Max. feed force speed: 4.3 m/s
 - Max. operating pressure: 250 bar
 - Weight: 653 kg
- Other aggregates on request

Control:

- DASA 4

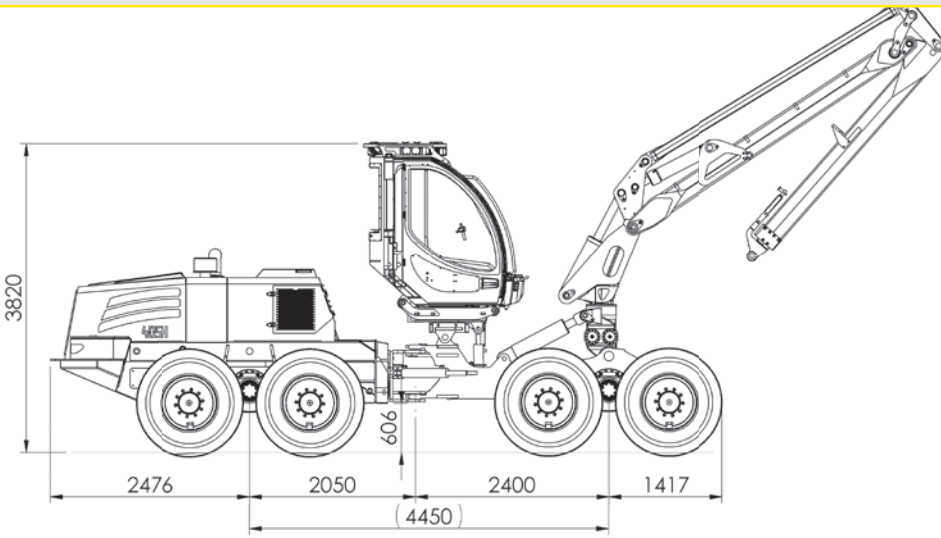
Series equipment:

- 19 LED work lamps on the cab, 4 work lamps in front of the crane, voltage transformer, radio, fire extinguisher, first-aid kit, warning triangle, tool set, bypass filter
- Diesel fill pump, hydraulic fill pump, vacuum pump

Special accessories:

- Sun blinds, auxiliary heating, GPS system, Data transfer and much more

405H2 8WD



Engine:

- IVECO
- NEF 6 cyl. Common Rail Turbo / EuroMot TIER3
- Engine output: 175 kW (238 DIN-PS)
- Max. rpm: 2200 rpm
- Torque: 1020 Nm at 1500 rpm
- Engine capacity: 6.7 liters

Transmission:

- hydrostatic-mechanical
- CMC electronic control
- NAF 2-speed transfer gearbox
- 140 kN tractive force

Axles:

- NAF balanced portal tandem axles
- at the front: 100 % selectable differential lock
- at the rear: 100 % selectable differential lock

Brake:

- 2-circuit brake, disk brakes running in an oil bath
- Spring-loaded parking brake

Steering:

- Articulated steering with 2 cylinders
- 2 steering cylinders, 52° steering angle

Tyres:

- | | Size: | Total width |
|-------------|-------------|---------------------|
| • Series: | 710/45-22.5 | 2880 mm |
| • Optional: | 800/40-26.5 | starting at 3180 mm |
| | 600/55-26.5 | starting at 2780 mm |
| | 54 x 37-25 | 3520 mm |

Diesel tank:

- 500 liters

Hydraulics:

- Load sensing
- Variable pump: 1 x 145 cm³ / 1 x 190 cm³
 - Flow rate: 469 l/min at 1400 rpm
 - Pressure: up to 380 bar
- Fixed displacement pump:
 - Flow rate: 15.4 l/min at 1400 rpm
 - Pressure: 120 bar
- Hydraulic liquid: Saturated, synthetic ester
 - Panolin HLP SYNTH with Kleenoil
 - WGK 1 microfiltration
- Control block: Rexroth
- Crane control: CMC digital electronics with individually adjustable speeds and ramp times, 5 driving programs

Electrics:

- 24 V, 2 x 90 A alternator
- 2 maintenance-free dry-cell batteries, each with 75 Ah

Cab:

- Height-adjustable at the front / rear
- Bent Lexan windscreen
- Windscreen wipers in the front and at the side
- Tested safety cab
- Air-suspended comfort seat
- Hot water heating
- Air conditioner
- Height-adjustable and rotatable (270°)

Instruments:

- Diesel tank gauge, coolant temperature, alphanumeric display for rpm, driving speed, hydraulic liquid temperature and all operating data for driving and working hydraulics, Warning indicator for engine overheating

Weight:

- 21800 kg (series)

Torsion lock:

- 2 hydraulic cylinders

Crane:

- Loglift L220 V100
 - Range: 10 m
 - Gross lifting moment: 188 kNm
 - Pivoting moment: 43.6 kNm

Aggregate:

- Waratah H480
 - Felling diameter: 710 mm
 - Delimbing diameter: 500 mm
 - Feed force with 800/500 cm³ engine: 30.2 kN
 - Max. feed force speed: 5.0 m/s
 - Max. operating pressure: 280 bar
 - Weight: 1250 kg
- Other aggregates on request

Control:

- DASA 4

Series equipment:

- 19 LED work lamps on the cab, 4 work lamps in front of the crane, voltage transformer, radio, fire extinguisher, first-aid kit, warning triangle, tool set, bypass filter
- Diesel fill pump, hydraulic fill pump, vacuum pump

Special accessories:

- Sun blinds, auxiliary heating, GPS system, Data transfer and much more

405H3 8WD

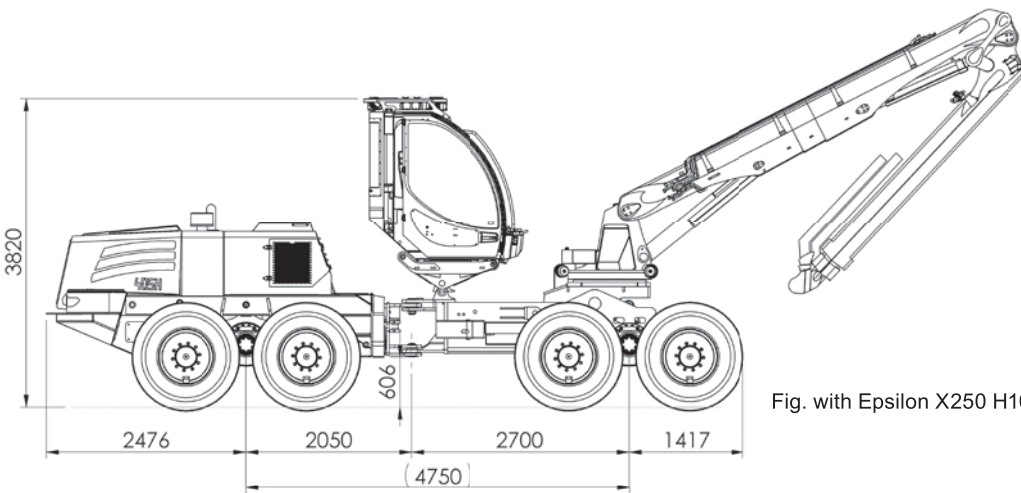


Fig. with Epsilon X250 H100 crane

Engine:

- IVECO
- NEF 6 cyl. Common Rail Turbo / EuroMot TIER3
- Engine output: 260 kW (354 DIN-PS)
- Max. rpm: 2100 rpm
- Torque: 1500 Nm at 1400 rpm
- Engine capacity: 8.7 liters

Transmission:

- hydrostatic-mechanical
- CMC electronic control
- NAF 2-speed transfer gearbox
- 140 kN tractive force

Axles:

- NAF balanced portal tandem axles
- at the front: 100 % selectable differential lock
- at the rear: 100 % selectable differential lock

Brake:

- 2-circuit brake, disk brakes running in an oil bath
- Spring-loaded parking brake

Steering:

- Articulated steering with 2 cylinders
- 2 steering cylinders, 52° steering angle

Tyres:

- | | Size: | Total width |
|-------------|-------------|---------------------|
| • Series: | 710/45-26.5 | starting at 2920 mm |
| • Optional: | 800/40-26.5 | starting at 3180 mm |
| | 600/55-26.5 | starting at 2780 mm |

Diesel tank:

- 500 liters

Hydraulics:

- Load sensing
- Variable pump: 1 x 145 cm³ / 1 x 190 cm³
 - Flow rate: 469 l/min at 1400 rpm
 - Pressure: up to 380 bar
- Fixed displacement pump:
 - Flow rate: 15.4 l/min at 1400 rpm
 - Pressure: 120 bar
- Hydraulic liquid: Saturated, synthetic ester
 - Panolin HLP SYNTH with Kleenoil
 - WGK 1 microfiltration
- Control block: Rexroth
- Crane control: CMC digital electronics with individually adjustable speeds and ramp times, 5 driving programs

Electrics:

- 24 V, 2 x 90 A alternator
- 2 maintenance-free dry-cell batteries, each with 75 Ah

Cab:

- Height-adjustable at the front / rear
- Bent Lexan windscreen
- Windscreen wipers in the front and at the side
- Tested safety cab
- Air-suspended comfort seat
- Hot water heating
- Air conditioner
- Height-adjustable and rotatable (270°)

Instruments:

- Diesel tank gauge, coolant temperature, alphanumeric Display for rpm, driving speed, hydraulic liquid temperature and all operating data for driving and working hydraulics, warning indicator for engine overheating

Weight:

- 23600 kg (series)

Torsion lock:

- 2 hydraulic cylinders

Crane:

- Loglift L280 V110
 - Range: 11 m
 - Gross lifting moment: 280 kNm
 - Pivoting moment: 65.0 kNm
- (Swivel gear drive for hydromotor)

Aggregate:

- Waratah H480
 - Felling diameter: 710 mm
 - Delimbing diameter: 500 mm
 - Feed force with 800/500 cm³ motor: 30.2 kN
 - Max. feed force speed: 5.0 m/s
 - Max. operating pressure: 280 bar
 - Weight: 1250 kg
- Other aggregates on request

Control:

- DASA 4

Series equipment:

- 19 LED work lamps on the cab, 4 work lamps in front of the crane, voltage transformer, radio, fire extinguisher, first-aid kit, warning triangle, tool set, bypass filter
- Diesel fill pump, hydraulic fill pump, vacuum pump

Special accessories:

- Sun blinds, auxiliary heating, GPS system, Data transfer and much more